

Socioeconomics and Oil Shale

A Second Chance

Doug Jeavons
Managing Director
BBC Research & Consulting
3773 Cherry Creek North Drive, # 850
Denver, Colorado 80209
303-321-2547
jeavons@bbcresearch.com



October 18, 2006

Colorado Energy Research Institute
26th Oil Shale Symposium

Déjà Vu...

**Close your eyes and
imagine it's October 18, 1981...**

- Exxon's Colony Oil Shale Project is in full swing
- Planners are preparing for the boom in Parachute, Meeker, Rifle, etc.
- The Governor's Office has assembled the Cumulative Impacts Task Force
- The CITF has developed a state-of-the-art socioeconomic computer model

Déjà Vu...

This time travel is easier if...

- You live (well) north of I-70
and
- You've had a lot of therapy

But, It's Not 1981 Again

“If the Federal Government is to contemplate a renewed oil shale effort, it must do so based on the lessons learned over the past 30 years. While the technologies are changing, so are the characteristics of ‘energy country’ in Northwest Colorado.

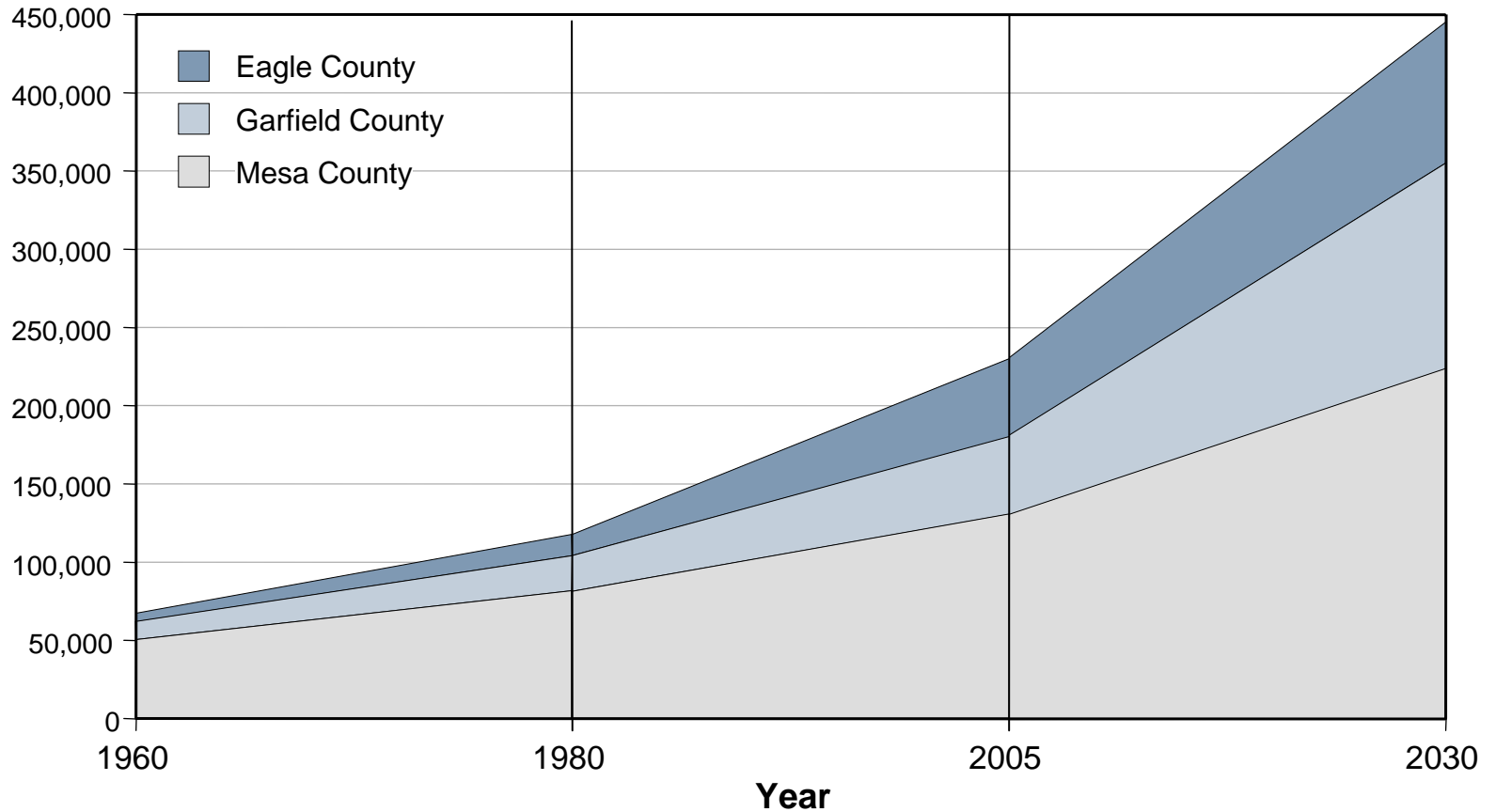
This development overlaps an area with increasing tourism and recreation opportunities and an expanding urban population. Oil shale leasing on top of this existing network of energy development and changing land uses may put more pressure on an already fragile ecosystem and public temperament.”

**Mr. Russell George, Executive Director
Colorado Department of Natural Resources
Testimony to the Senate Energy and Natural Resources Committee
April 12, 2005**

It Really Isn't!

I-70 Corridor Population

Residents



And it's Not Just More People ...

- More complicated regional economy
- More skepticism
- More sophistication

Model Outputs

The model projects:

- County-wide population by age and gender
- Study area (including cities) populations
- School district populations and projected enrollments
- LEP population by age range
- Population by one square mile grid cells (with Community Viz)
- Employment by sector
- Earnings and output
- Outcommuting by destination

Model Uses

Users can:

- Develop and update overall planning projections through 2030 for the county or subcounty areas
- Examine effects of alternative assumptions about key issues such as:
 - Outcommuting to adjoining counties
 - Employment growth/contraction in key industries
 - Specific projects/developments (e.g. oil shale)
 - Changes in federal/state immigration policy
 - Demographic influences (e.g. fertility rates, labor force participation)
 - Municipal and county planning decisions

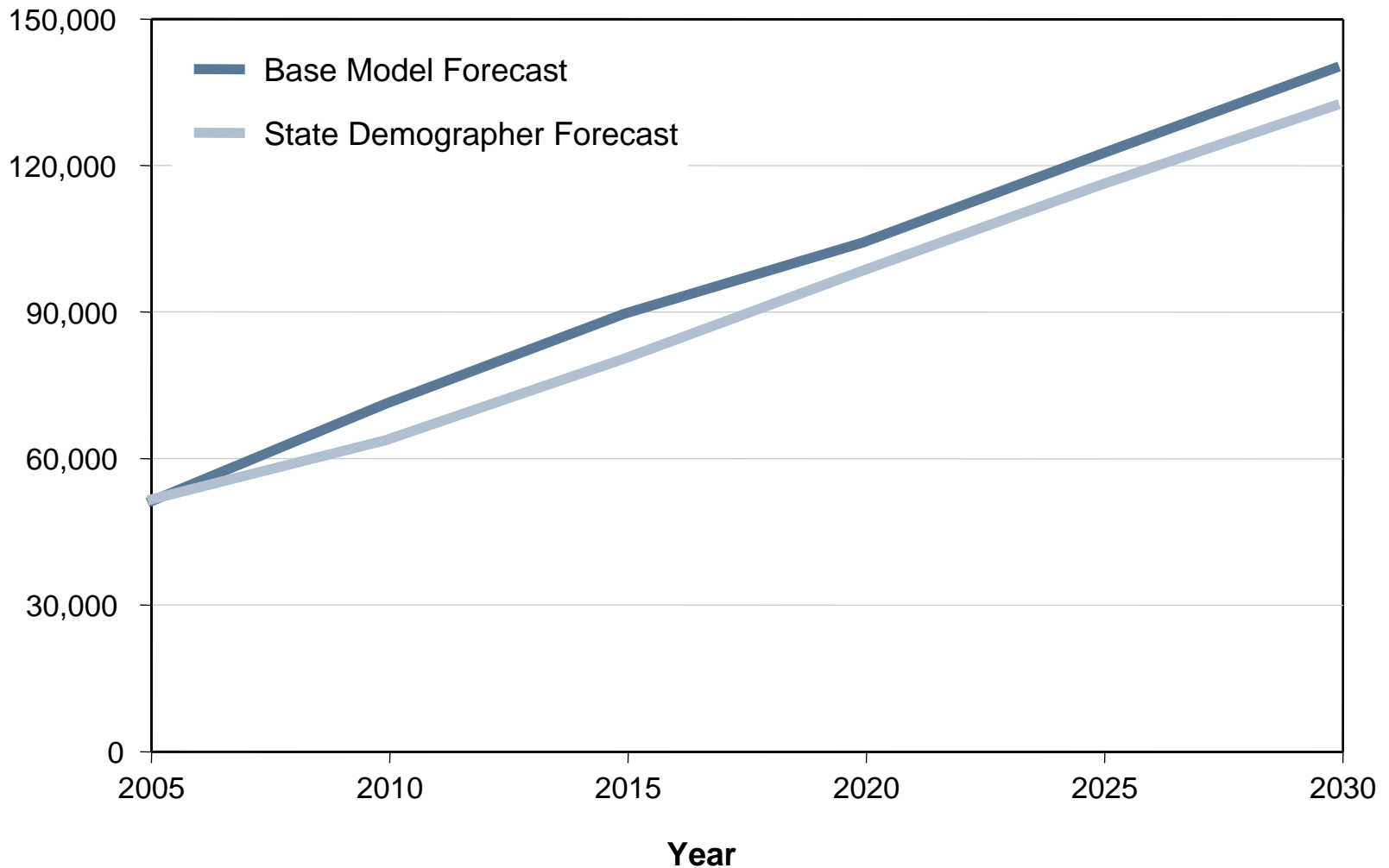
Base Scenario Assumptions

Economic Base	Preliminary Assumption
Tourism	Annual job growth at 1.5 to 2.5%*
Regional Services	Annual job growth at 1.5 to 2.5%*
Gas	Garfield jobs peak at 2,640 in 2017, 1,430 ongoing resident maintenance jobs
Government	Annual job growth at 1%*
Agriculture/Ag. Services	Annual job growth at 0%*
Manufacturing	Annual job growth at 1%*
Net Outcommuting	Per Watershed Collaboratives Report*
External Household Funding	Growth in second homes and non-wage income at rates of 2% to 4%*

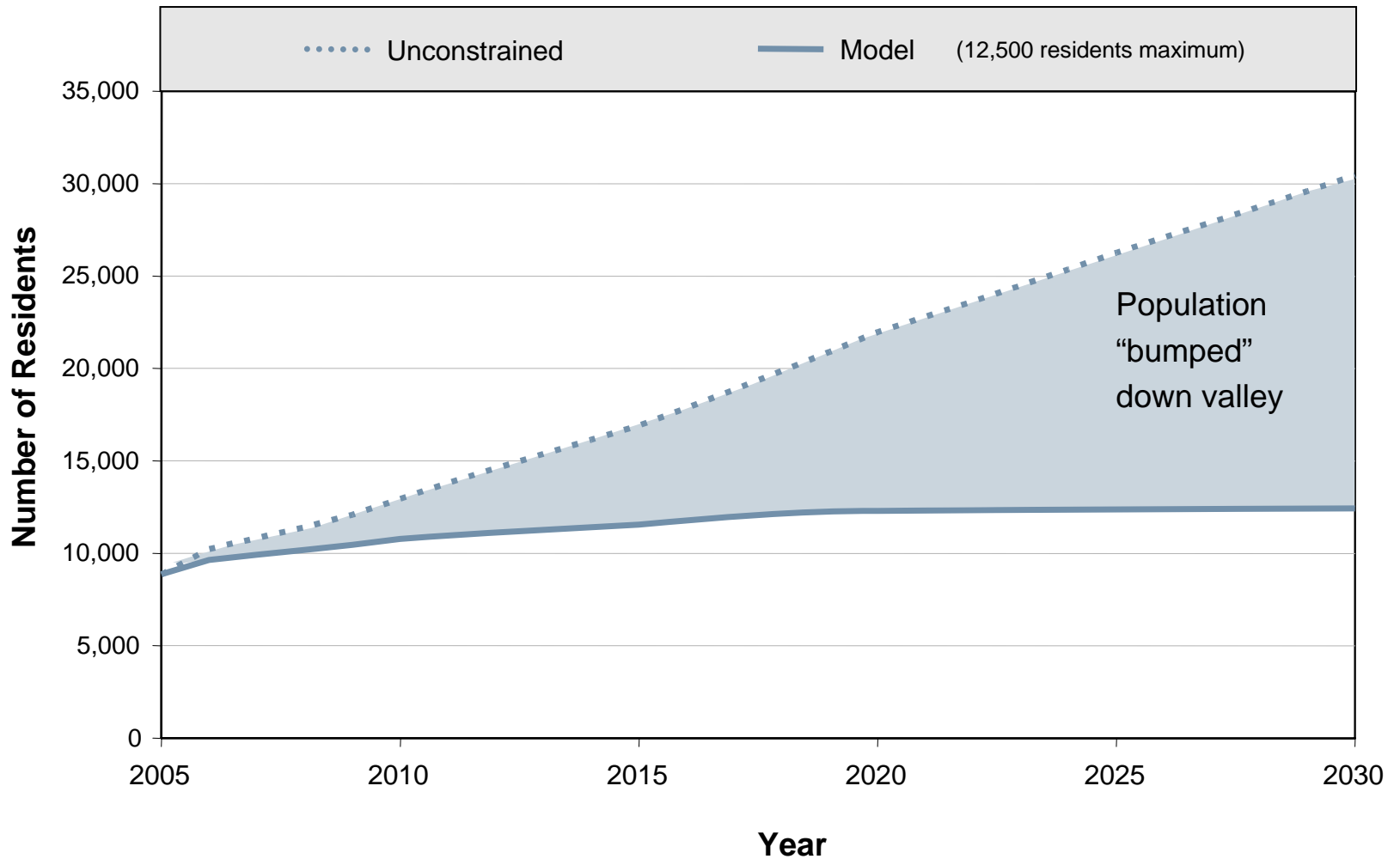
*Assumptions consistent with State Demographer's forecast

Garfield County Population Forecast

Total Population

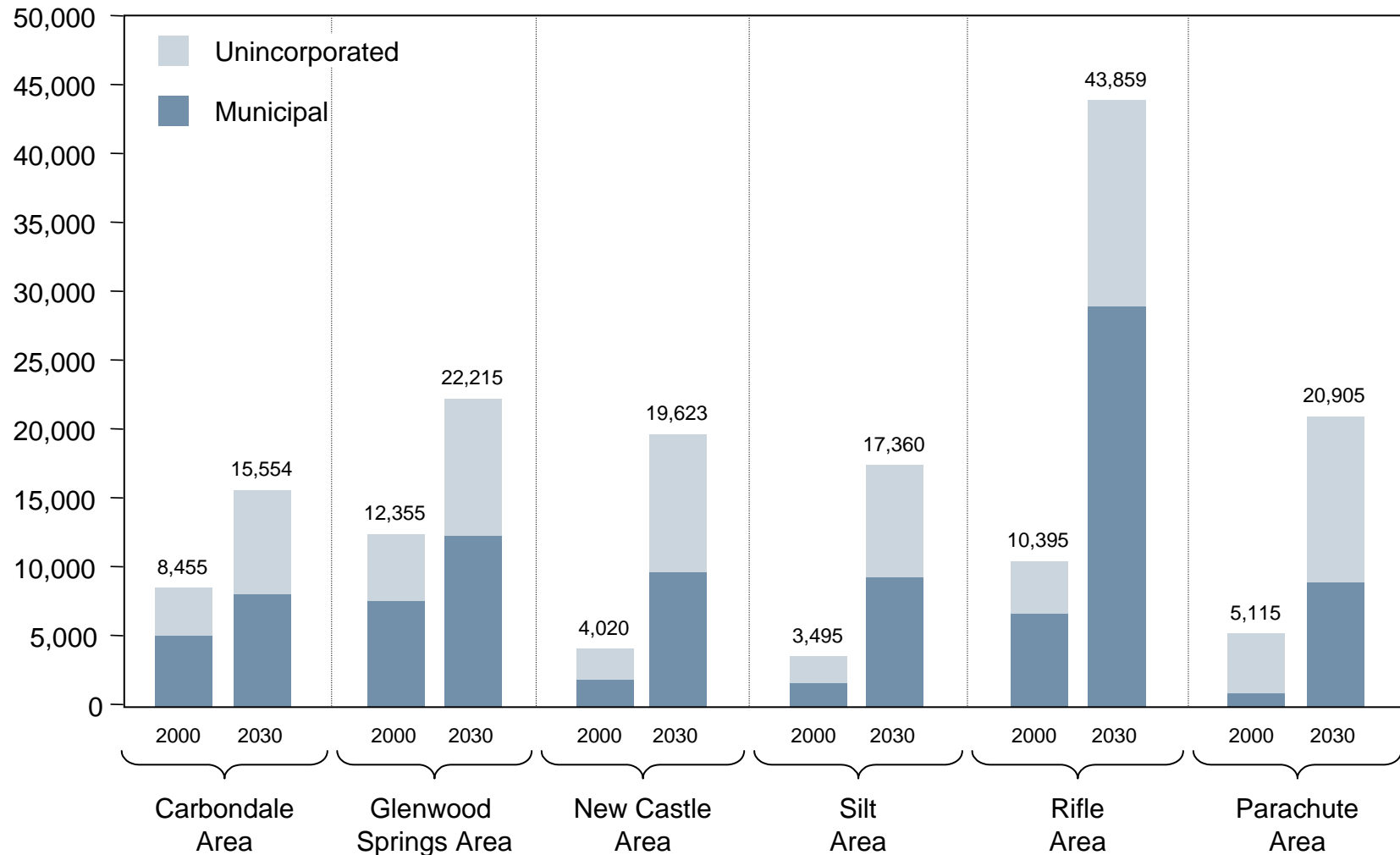


Glenwood Springs Population Watershed Collaborative Scenario

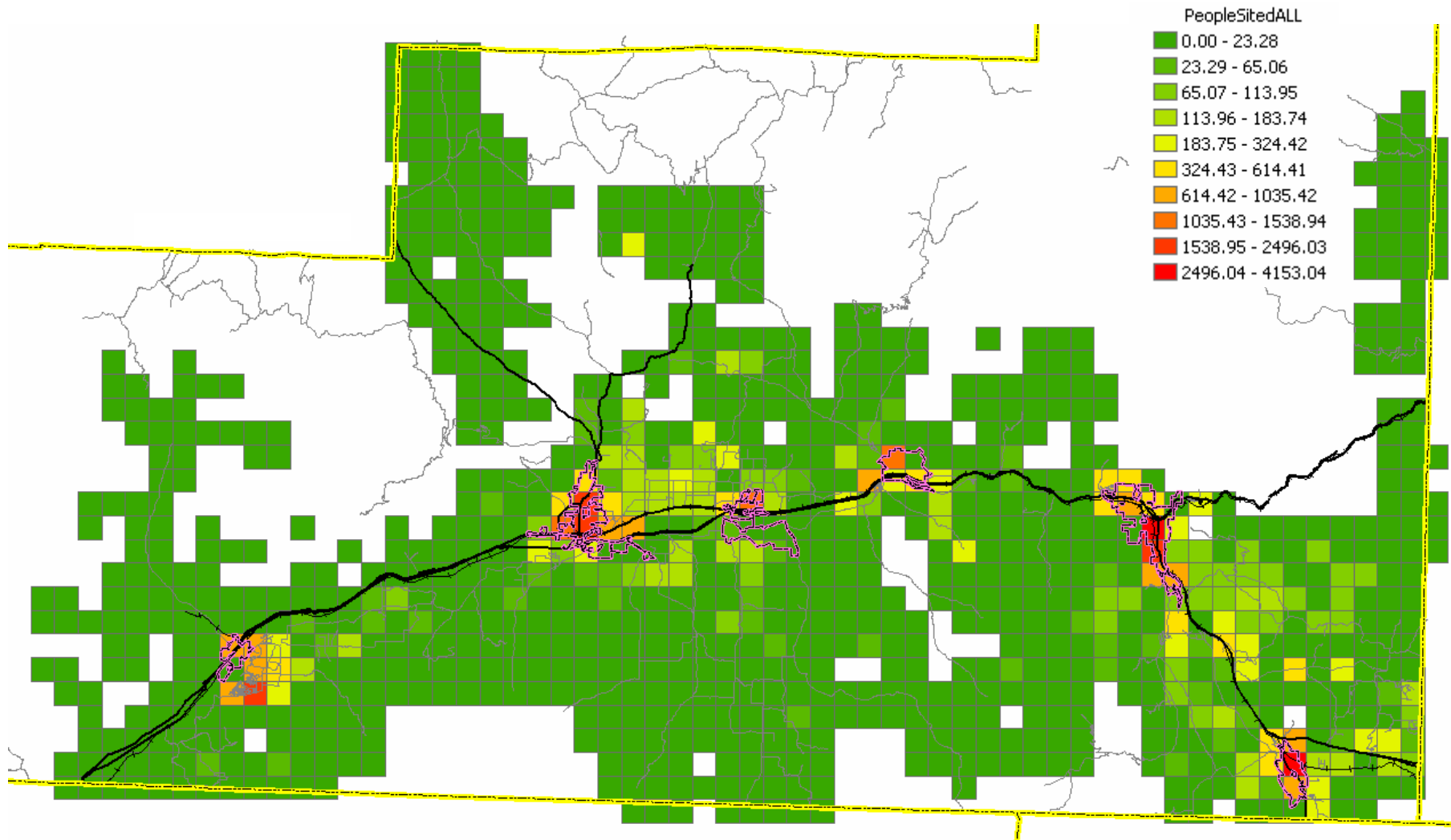


Study Area Population Distribution

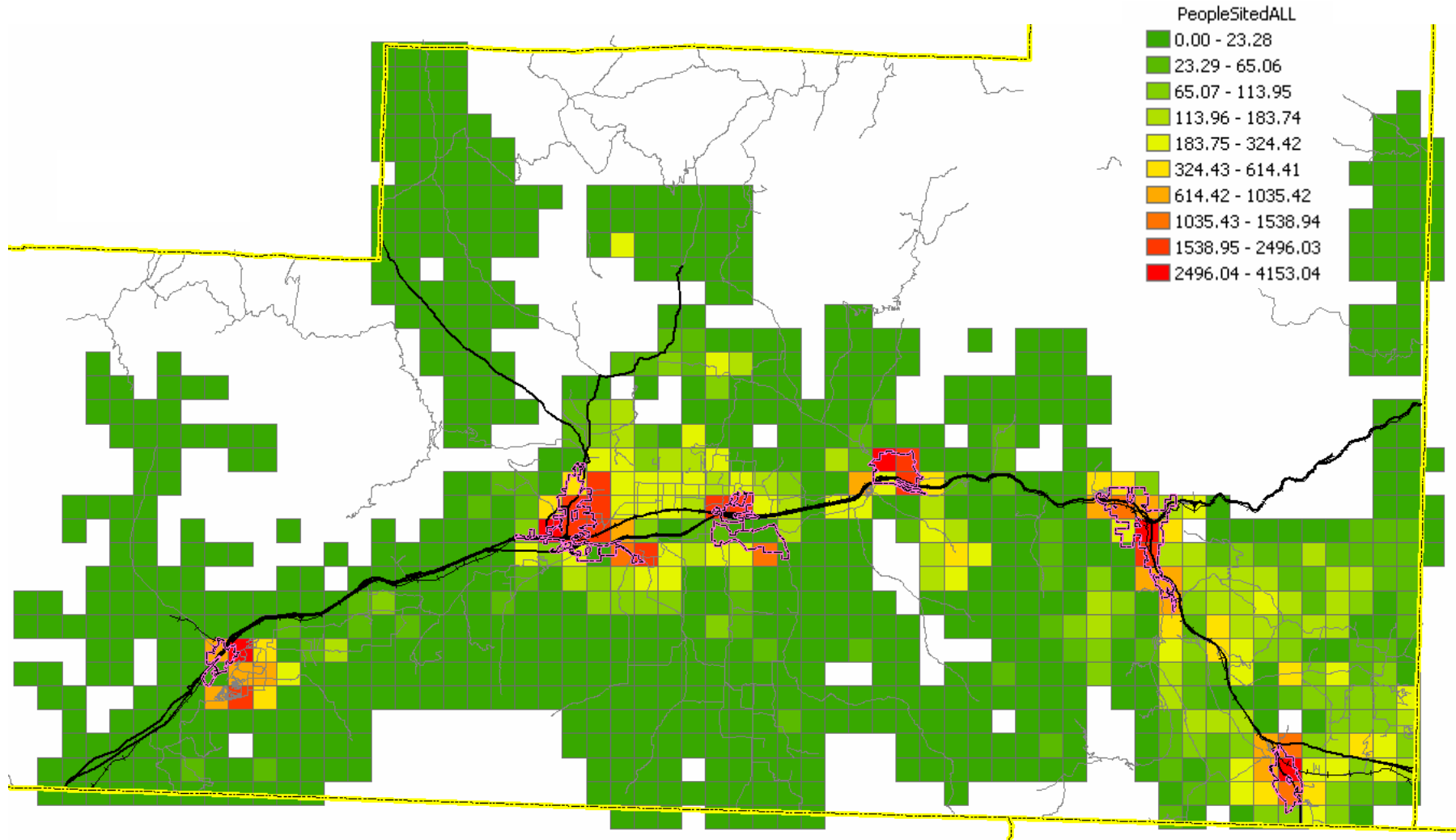
Total Population



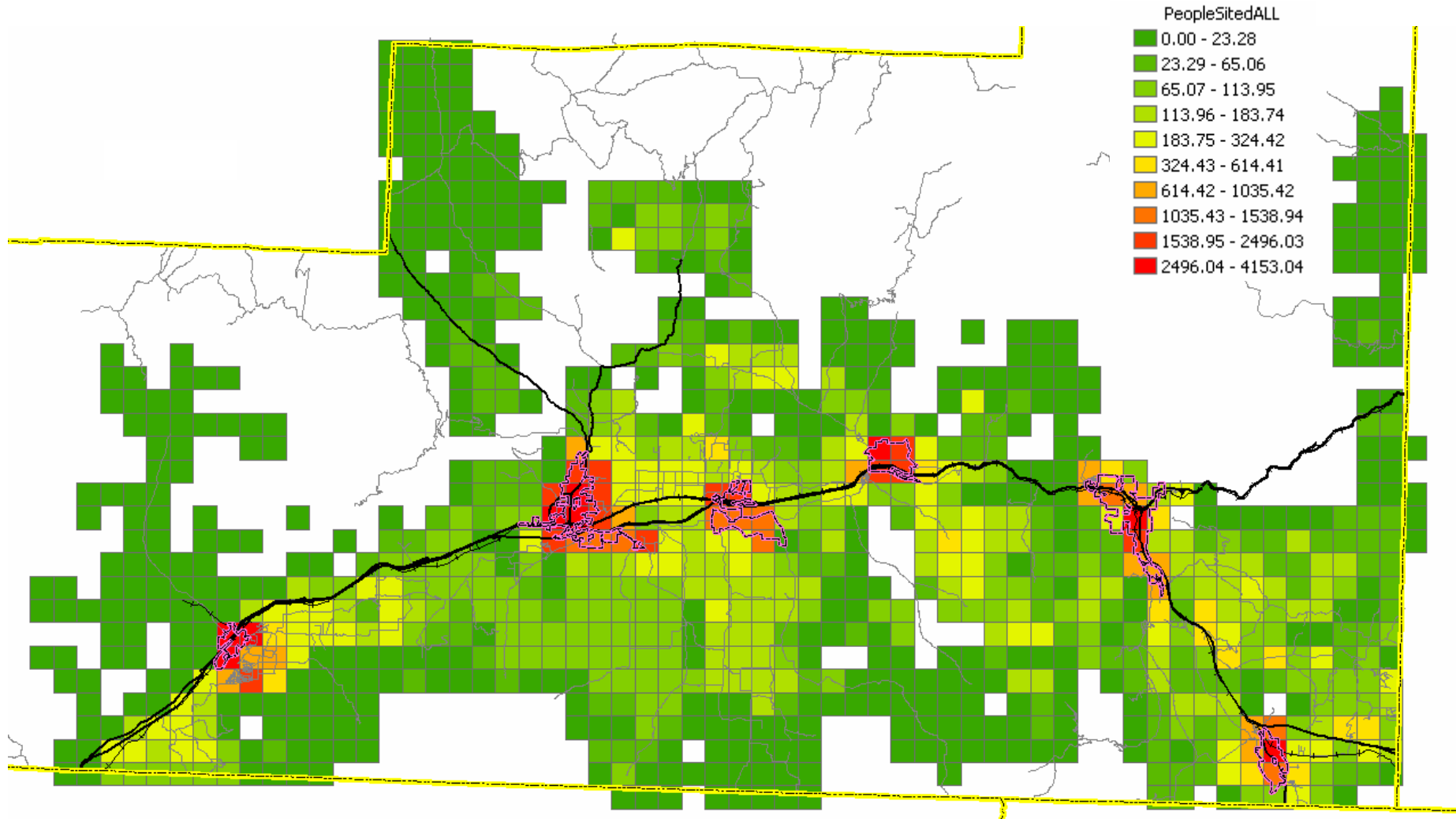
Population Density — 2005



Population Density — 2015 (Base Case)



Population Density — 2030 (Base Case)



What to make of all this?

- Western Colorado is a different place than in 1981
- Communities along I-70 corridor already challenged by growth, workforce housing and labor availability
- The future is uncertain — we need very flexible planning tools!